



Mask-Style Respirators Spectrum Series®

Comfort, Low Profile, Outstanding Visibility, Simplicity

Finally, there's a respirator that fits — your face, your needs, and your high expectations. Integrating intelligent features with innovative design, Bullard takes respiratory protection to a whole new level. The Spectrum Series® offers outstanding comfort, low-profile fit, unparalleled visibility, simplicity, and 1,000 Assigned Protection Factor (APF).

With the Spectrum Series®, Bullard can meet all of a customer's airline respirator needs — from continuous flow tight-fitting facepieces to escape Self-Contained Breathing Apparatus (ESCBAs) respirators. The four models in the Spectrum Series® include:

- Continuous flow
- Pressure demand
- Pressure demand with 5-minute cylinder
- Pressure demand with 10-minute cylinder

Spectrum Protection

- NIOSH Approval TC #19C-0505, 0506, 0507, 0508, 0509, 0510
- 1,000 Assigned Protection Factor (APF)
- ANSI/ISEA Z87.1, Z87+ Impact Face Protection

Spectrum Comfort

- Lightweight silicone flange seals softly against the user's face without feeling slippery
- Double flange provides a secure, comfortable fit across a wide range of facial sizes and contours
- Multiple size options

Spectrum Low Profile

- Allows user to get close to their work
- Allows user to fit into tight spaces
- Reduces snag hazards
- Compatible with hard hat donning

Spectrum Visibility

- Optically correct lens provides superior peripheral vision
- Clear nose cup allows more light into the mask, minimizing the closed-in feeling prevalent in other masks
- Mylar® Lens covers keep the lens clean and protected

Spectrum Simplicity

- Snap-together parts make assembly and maintenance quick and efficient without requiring special tools
- A single facepiece platform design allows for conversion to other respirator configurations

Spectrum Versatility

- The Spectrum Full-Face mask allows for multiple configurations:
 - PAPR (with the Bullard EVA)
 - Continuous Flow - Ambient Air Pump
 - Continuous Flow - Compressed Air
 - Pressure Demand - Compressed Air

Mask-Style Respirators Spectrum Series® Full-Facepiece

Features	Benefits
Low Profile	Fits under welding helmets
1,000 APF	100X the protection of APR Half Mask
Polycarbonate Lens	ANSI/ISEA Z87+ Face Protection Great optics for clear vision
Silicone Straps & Flange Seals	Highest Comfort
Nosecup	Improved Comfort Prevents Fogging Clear design for improved visibility
Speaker Diaphragm	Improved communication
Reusable	Low total cost of ownership
No Cartridges Required	Low total cost of ownership
PAPR: Powered Air Purifying Respirator SAR: Supplied Air Respirator PD: Pressure Demand	Multiple configurations allow the user to buy a single platform for many applications

Applications

Painting and Coating Operations, Spray Foam Insulation, Remediation, Chemical Handling, Confined Space (with Escape bottle)



Mask-Style Respirators Spectrum Series® Full-Facepiece

Mask-Style Respirators Spectrum Series® Full-Facepiece

1. Choose Supplied Air Mode

Continuous Flow

Most popular configuration is SPEC40L (air supply hose not included)

Pressure Demand

Most popular configuration is SPECPLA (air supply hose not included)

Pressure Demand with Escape Bottle

Most popular configuration is SPECPE10L (air supply hose not included)

2. Choose Mask Size



- SPECFFML - Medium/Large
- SPECFFS - Small



- SPECDFML - Medium/Large
- SPECDFS - Small

3. Add Breathing Tube



- SPECBT - Spectrum Breathing Tube

4. Choose Flow Control/Regulator Assembly



1/4" Constant Flow

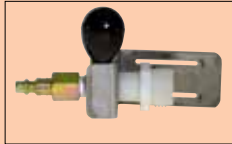
- F30, F30B, F30S Industrial Interchange (Hansen Compatible)
- F31 - Schrader
- F32 - Snap-Tite Steel
- F33 - Snap-Tite Brass
- F34 - Snap-Tite Stainless
- F37 - CEJN
- F38 - Bayonet Steel



1/2" Constant Flow

- F35, F35B, for Free-Air® Pumps Constant Flow control Valve, 1/2" Industrial Interchange (Hansen Compatible)

4. Choose Flow control/Regulator Assembly Continued



1/4" Adjustable Flow

- F40, F40B, F40S Industrial Interchange (Hansen Compatible)
- F41 - Schrader
- F42 - Snap-Tite Steel
- F43 - Snap-Tite Brass
- F44 - Snap-Tite Stainless
- F47 - CEJN
- F48 - Bayonet Steel



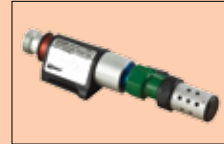
Cool Tubes for Compressed Air (Metal)

- AC100030, AC100030B, AC100030S 1/4" Industrial Interchange (Hansen Compatible)
- AC100031 - Schrader
- AC100032 - Snap-Tite Steel
- AC100033 - Snap-Tite Brass
- AC100034 - Snap-Tite Stainless
- AC100037 - CEJN
- AC100038 - Bayonet Steel



Cool Tubes for Compressed Air (Plastic)

- CT30, CT30B, CT30S 1/4" Industrial Interchange (Hansen Compatible)
- CT30SW, CT30BSW, CT30SSW 1/4" Industrial Interchange with Dynaswivel fitting
- CT31 - Schrader
- CT32 - Snap-Tite Steel
- CT33 - Snap-Tite Brass
- CT34 - Snap-Tite Stainless
- CT37 - CEJN
- CT38 - Bayonet Steel



Hot/Cold Tubes for Compressed Air (Metal)

- HC240030, HC240030B, HC240030S 1/4" Industrial Interchange (Hansen Compatible)
- HC240031 - Schrader
- HC240032 - Snap-Tite Steel
- HC240033 - Snap-Tite Brass
- HC240034 - Snap-Tite Stainless
- HC240037 - CEJN
- HC240038 - Bayonet Steel



Hot/Cold Tubes for Compressed Air (Plastic)

- HCT30, HCT30B, HCT30S 1/4" Industrial Interchange (Hansen Compatible)
- HCT30SW, HCT30BSW, HCT30SSW 1/4" Industrial Interchange with Dynaswivel fitting
- HCT31 - Schrader
- HCT32 - Snap-Tite Steel
- HCT33 - Snap-Tite Brass
- HCT34 - Snap-Tite Stainless
- HCT37 - CEJN
- HCT38 - Bayonet Steel

4. Choose Flow control/Regulator Assembly Continued



- PDR45 - Second stage regulator with Bypass including CA30 Industrial Interchange (Hansen Compatible) coupler
- BHA - Belt/Harness Assembly

Optional Couplers:

- CA30S - 1/4" Industrial Interchange Stainless
- CA31 - 1/4" Schrader
- CA32 - 1/4" Snap-Tite
- CA33 - 1/4" Snap-Tite Brass
- CA34 - 1/4" Snap-Tite Stainless
- CA37 - 1/4" CEJN



- RA45B - First and second regulator with bypass including CA30 Industrial Interchange (Hansen Compatible) coupler
- BHA - Belt/Harness Assembly

Optional Couplers:

- CA30S - 1/4" Industrial Interchange Stainless
- CA31 - 1/4" Schrader
- CA32 - 1/4" Snap-Tite
- CA33 - 1/4" Snap-Tite Brass
- CA34 - 1/4" Snap-Tite Stainless
- CA37 - 1/4" CEJN

5. Choose Escape Bottle



• CYL5H - 5 Minute



• CYL10H - 10 Minute

6. Choose Accessories



- PL - Spectacle Frame Assembly



- LC - Mylar® Lens Covers



- AFW45 - Anti-Fog Lens Wipes



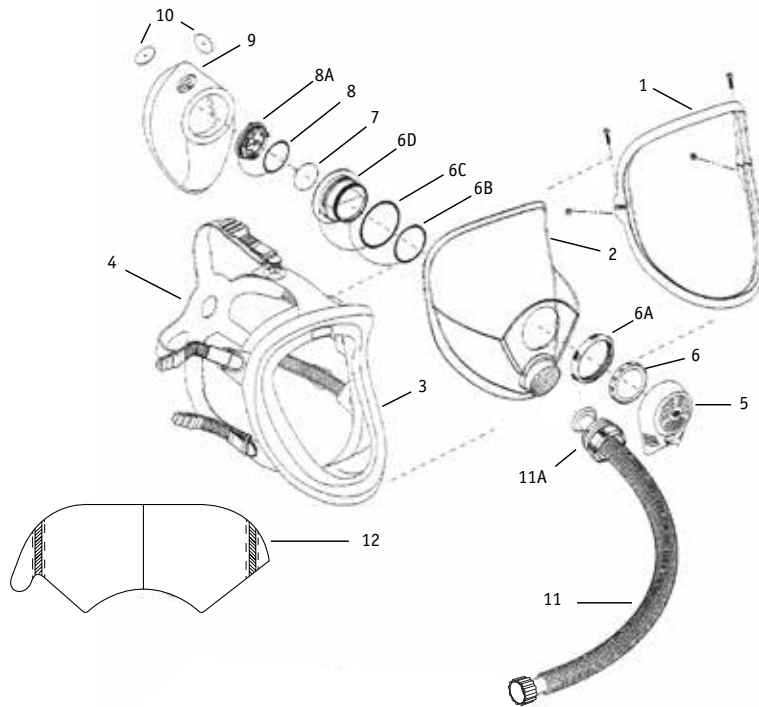
- QNFT45 - Quantitative Fit Test Kit

7. Choose Air Supply Hose

- See pages 194-200

Spectrum Series®

Spectrum Series® Continuous Flow Replacement Parts



Cat. No.	Description	Cat. No.	Description
1. LCK	Lens Clamp Replacement	8. EVO (includes parts listed)	O-ring for Exhalation Valve Seat
2. RLS	Replacement Lens	8A	Exhalation Valve Seat
3. FKML & FKS	Facepiece Flange	9. LNK	Nose Cup
4. HSK	Headstrap with Buckles and Slides	10. SPECIVK	Inhalation Valve Flaps
5. MCK	Mask Cover	11. SPECBT	Breathing Tube Assembly
6. SEK (includes parts listed)	Speaker Diaphragm	11A	Breathing Tube Adapter
6A	Outer Locking Ring	12. LC	Mylar® Lens Covers
6B	O-ring Speaker Diaphragm		
6C	O-ring Speaker/Exhalation		
6D	Speaker/Exhalation Body		
7. 6059	Exhalation Valve		

Continuous Flow Airline Respirator

A complete Spectrum Series® Continuous Flow Airline Respirator consists of the following three components:

1. Full-Facepiece
2. Breathing Tube Assembly
3. Breathing Air Supply Hose

All three Bullard components must be present and properly assembled to constitute a NIOSH approved respirator.

Approval No. TC-19C-322, Type C, Continuous Flow Class

