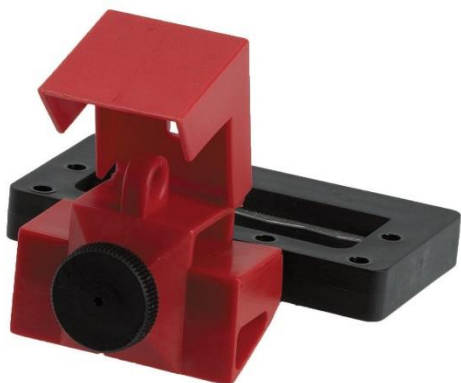


Oversized Clamp-On Breaker Lockout



Product Highlights

Risk Type:Electrical Risk

Circuit Breaker Lockout Type:Single-Pole

Dimensions:2.5 in H x 3.75 in W x 3.8 in D

Part Number:65321

Overview

This oversized 480/600V frame lockout fits breaker switches up to 2-1/4 in. wide and 7/8 in. thick and applies in seconds with thumbscrew mechanism, no screwdriver needed.

- Oversized Clamp-On Breaker Lockouts are made of durable polypropylene and glass-filled impact-modified nylon
- This lockout device isolates and secures circuit breaker switches to protect employees against electrical accidents during equipment maintenance
- Equipping your employees with the proper lockout tools and warning devices can save lives, reduce lost employee time, and cut insurance costs
- Brady® is a world leader in lockout/tagout products and services offering industry expertise and a broad range of durable, easy-to-use lockout devices

Specifications

Key Characteristics	<u>Catalog Page #</u>	221
	Product Number	65321
	UPC	754473653217
	UOM	Pack of 6 Each
	Brand Name	Brady®
	<u>Country of Origin</u>	Mexico
Dimensions	Dimensions	2.5 in H x 3.75 in W x 3.8 in D
	Height	2.5 in
	Width	3.75 in
	Depth	3.8 in
	Handle/Toggle Width	2.75 in
Material Characteristics	<u>Material Number</u>	LOTO-39 (View Technical Data Sheet)
	Material	Polypropylene
	Color	Red

Product Features	Circuit Breaker Lockout Type	Single-Pole
	Maximum Number of Padlocks	1
	Risk Type	Electrical Risk
Compatibility	Maximum Shackle Diameter	0.31 in
Compliance	UNSPSC	39121901